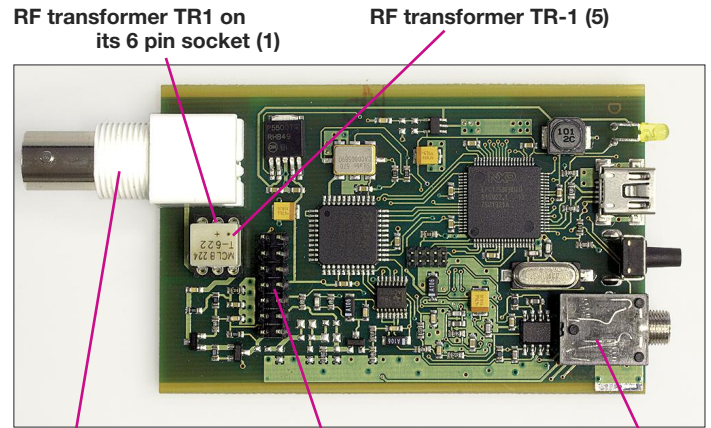


Quick Assembly Guide: 11 steps to build your FiFi SDR 2.0

Main Board top side (Figure A)

1. Install the 6 pin IC socket for TR1 and solder all pins.
2. Install phone jack (X4) and solder it.
3. Install the 2x7 pin male (X3/X6 as one part) with the long pins facing you and solder all (shorter) pins.
4. Install the BNC connector (X2) and solder it.
5. Insert the RF transformer TR1 (direction does not matter because internal circuit is symmetrical).

Your main board is now ready.

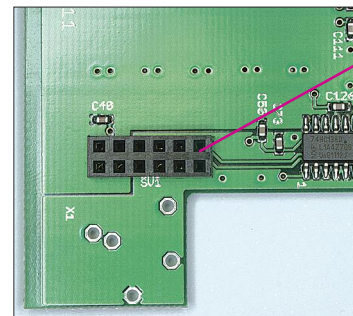


RF transformer TR1 on its 6 pin socket (1) RF transformer TR-1 (5)
BNC connector (4) 2 x 7 pin connector (3) phone jack (2)
Figure A: Location of parts to install on the top side

Preselector Board bottom side (Figure B)

6. Install the 2x6 pin jack (female) next to the small IC and solder it.

The preselector board is now ready for connecting with the main board.



2 x 6 pin jack (6)
Note: Main board connector has 2 x 7 pin. The additional 2 pins are provided for future extensions

Figure B: Preselector board, location of the 2 x 6 pin jack (female)

Assembly of the 2 boards (Figure C + D)

7. Assemble both boards carefully as shown in Figure C (2 connector pins on the main board are not connected to the jack on the preselector board).

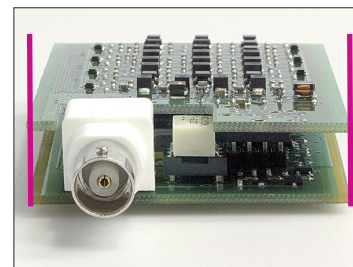


Figure C: Boards correctly assembled

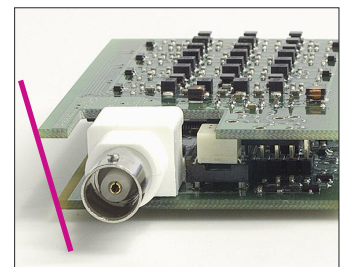


Figure D: Incorrectly assembled

Enclosure

8. Put together both housing shells and attach the panel with the large hole for the BNC connector and fix the panel using 2 screws.
9. Slide both boards into the enclosure.
10. Attach the other panel and fix it.
11. Finally attach the flat nut to the BNC connector.

Now your FiFi SDR is ready to get connected with your PC and an antenna.

First install the USB driver (folder *FiFi-Treiber* on the CDROM).

Because the firmware is already preprogrammed you can immediately start with your preferred SDR software. *RJ10FiFi.exe* (192 kHz are not supported) from Bonito you will find as .zip on the CDROM.

Good luck.

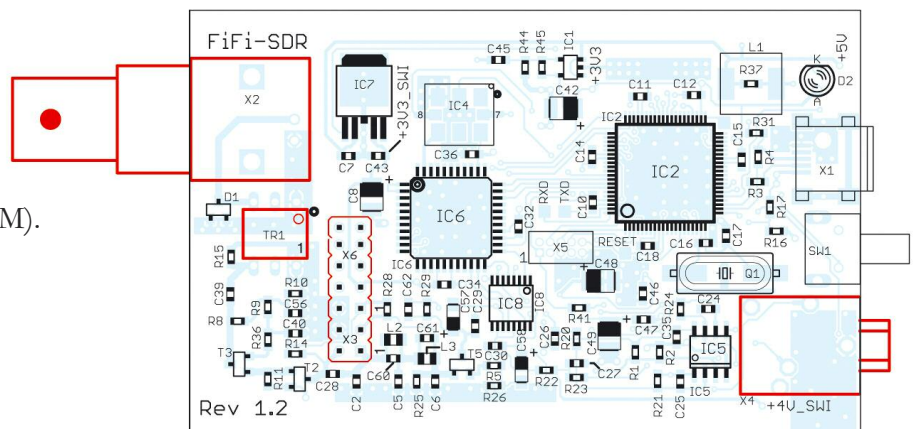


Figure E: Only the red marked parts must be installed on the main board. Note: 2 pins of the 2 x 7 pin connector are currently not used